

CERTIFICATE OF LOCATION OF GOVERNMENT CORNER

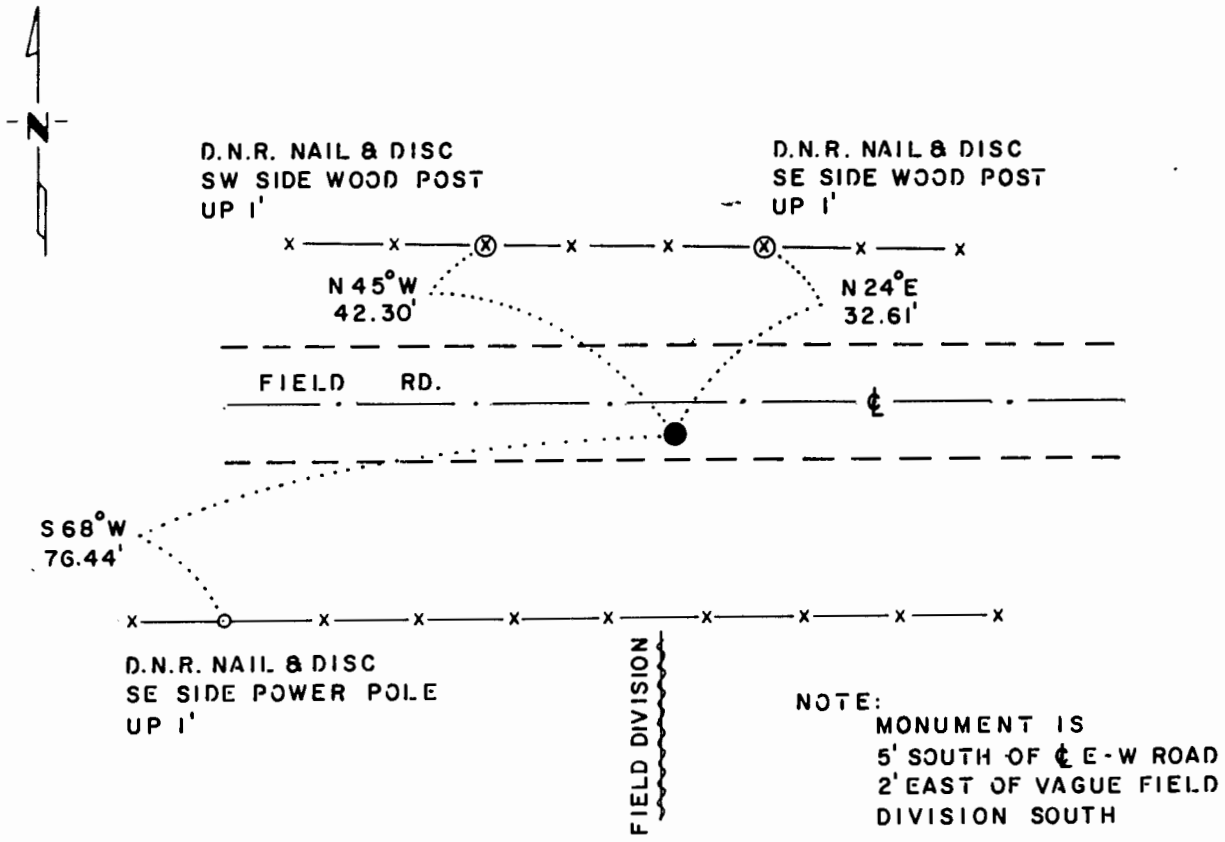
NORTH QUARTER Corner of Section 21, Township 106 N., Range 42 W., 5th P.M.

STATE OF MINNESOTA, County of MURRAY

At the corner location shown on the sketch:

- On 11-2-83 found a 1/4"x1 1/2"x15" IRON STAKE, DOWN 0.1' ON NORTH SIDE
DATE
OF A 12"x16"x24" FIELD STONE, FLUSH
 left monument as found, lowered monument, removed monument (explain)
- On 11-2-83 placed a 1 1/4"x1 1/4"x20" PERFORATED STEEL TUBE WITH ALUMINUM
DATE
CAP STAMPED "D.N.R. SURVEY MARKER" BETWEEN IRON STAKE AND STONE, DOWN 0.5'

SKETCH OF REFERENCE TIES



NOTE:
 MONUMENT IS
 5' SOUTH OF ϵ E-W ROAD
 2' EAST OF VAGUE FIELD
 DIVISION SOUTH

BEARINGS OBSERVED WITH COMPASS

Statement of evidence relative to this corner location is on back of page.

J. B. M. 4-2-84
 G-1158

I hereby certify that this document and the data contained herein was prepared by me or under my direct supervision.

Lowell R. Pomeroy 6-16-86
SIGNATURE DATE

Registration No. 17005

- Land Surveyor, Professional Engineer
- County Surveyor, County Engineer

OFFICE OF THE COUNTY RECORDER

County of _____

I hereby certify that this document was filed in the Co. Recorders' office at _____ M. on the _____ day of _____ A.D., 19 _____

County Recorder _____

By _____, Deputy

DOCUMENT NO. _____

North Quarter Corner Section 21, Township 106 North, Range 42 West

This corner was originally established by the U. S. General Land Office survey in 1866. The government notes show corner marked with a wood post set in mound of earth with pits and trench dug around the mound.

In November 1983, the DNR Bureau of Engineering contacted the Murray County Offices of the Recorder and Highway Engineer for corner information.

The following information was obtained from the County Recorder's Office:
Surveyor's Record Book A, on Page 229 contains a survey by J. W. Woolstencraft, dated November 20, 1912. Survey shows corner as an iron stake 3 ft. west and 3 ft. south of fence corner. Survey shows a distance of 2643 ft. to the northwest corner Section 21.

This information is also contained in a Surveyor's Record Book in the Highway Engineer's Office.

In November 1983, the DNR Bureau of Engineering traversed to the area of the corner and found a $\frac{1}{4}$ " by $1\frac{1}{2}$ " by 15" iron stake down 0.1 ft. on the north side of a 12" by 16" by 24" field stone flush. Reset the stone down 5" and set the iron stake down 8" on the north side of the stone. Corner measures:

2643.10 ft. from the northwest corner Section 21

2638.70 ft. from the northeast corner Section 21

Accept the found iron stake and stone as the location of the corner.

Traverse information is available from the DNR Bureau of Engineering.

10hab/cors